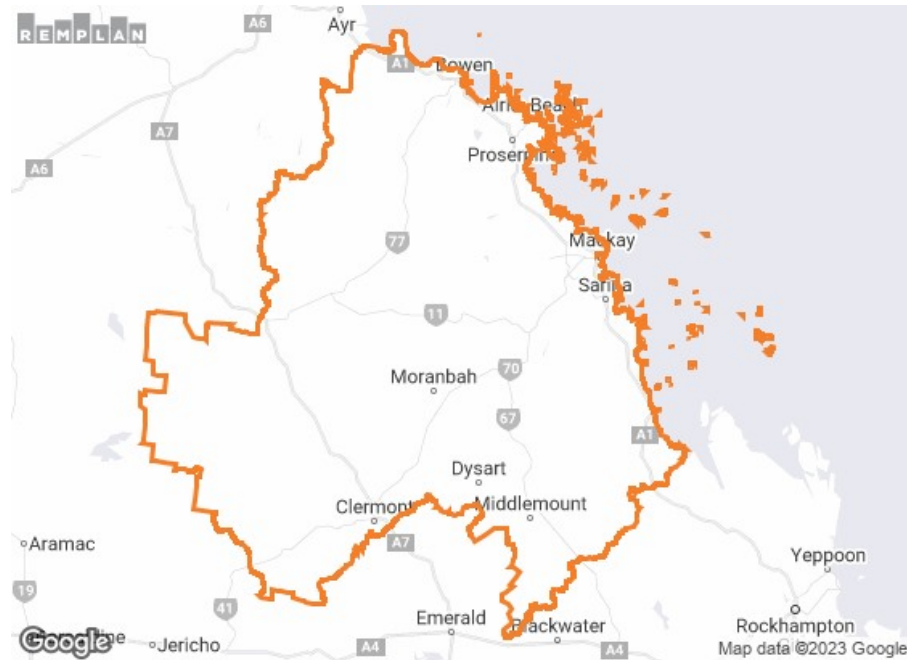


Economic Overview

Mackay - Isaac - Whitsunday (SA4) (2022 Release 2)



DATA SOURCES

- ABS 2021 Census Place of Work Employment (Scaled)
- ABS 2020 / 2021 National Input Output Tables
- ABS June 2022 Gross State Product
- ABS 2021 Census Place of Work Employment (Scaled)
- ABS 2021 / 2022 Tourism Satellite Account
- TRA 2022 Tourism Profile REMPLAN 2022 Tourism Analysis Model

Summary Findings

ABS 2022 Estimated Residential Population:	186,215
ABS 2021 Census Place of Usual Residence Population:	180,894
Land Area (ha):	9,014,018.840
Census Population Density (persons / ha):	0.020
Gross Regional Product (\$M):	\$27,265.104
Per Hectare Gross Regional Product (\$K):	\$3.025
Per Capita Gross Regional Product (\$K):	\$150.724
Per Worker Gross Regional Product (\$K):	\$279.407

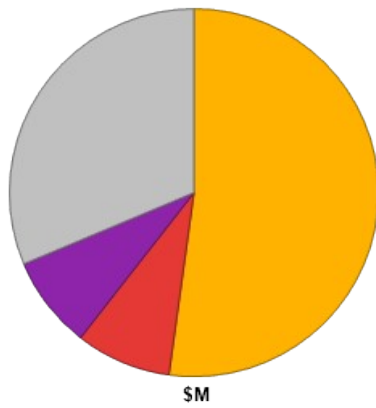
Output

Total Output in the area is estimated at \$57,999.075 million.

The major contributors to output are:

Industry Sector	\$M	%
Mining	\$30,258.244	52.2%
Manufacturing	\$4,856.583	8.4%
Construction	\$4,712.712	8.1%
Other	\$18,171.535	31.3%

Output - Mackay - Isaac - Whitsunday (SA4)
(2022 Release 2)



- Mining \$30,258.244
- Manufacturing \$4,856.583
- Construction \$4,712.712
- Balance \$18,171.535

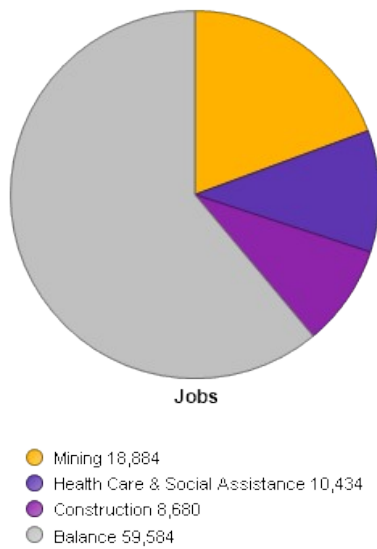
Employment

Total Employment in the area is estimated at 97,582 jobs.

The major contributors to employment are

Industry Sector	Jobs	%
Mining	18,884	19.4%
Health Care & Social Assistance	10,434	10.7%
Construction	8,680	8.9%
Other	59,584	61.1%

Employment - Mackay - Isaac - Whitsunday
(SA4) (2022 Release 2)



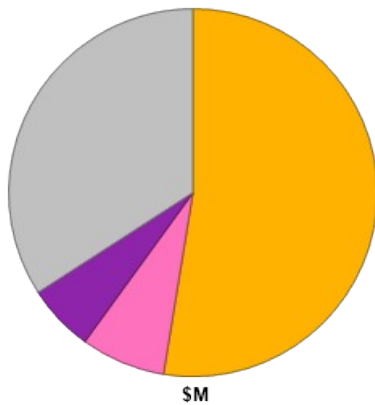
Value-Added

Total Value-added in the area is estimated at \$26,352.058 million.

The major contributors to value-added are

Industry Sector	\$M	%
Mining	\$13,851.713	52.6%
Rental, Hiring & Real Estate Services	\$1,956.603	7.4%
Construction	\$1,550.547	5.9%
Other	\$8,993.195	34.1%

**Value Added - Mackay - Isaac - Whitsunday
(SA4) (2022 Release 2)**



- Mining \$13,851.713
- Rental, Hiring & Real Estate Services \$1,956.603
- Construction \$1,550.547
- Balance \$8,993.195

Disclaimer

All figures, data and commentary presented in this report are based on data sourced from the Australian Bureau of Statistics (ABS), most of which relates to the 2021, 2016, 2011, 2006 and 2001 Censuses.

Using ABS datasets and an input / output methodology industrial economic data estimates for defined geographic regions are generated.

This report is provided in good faith with every effort made to provide accurate data and apply comprehensive knowledge. However, REMPLAN does not guarantee the accuracy of data nor the conclusions drawn from this information. A decision to pursue any action in any way related to the figures, data and commentary presented in this report is wholly the responsibility of the party concerned. REMPLAN advises any party to conduct detailed feasibility studies and seek professional advice before proceeding with any such action and accept no responsibility for the consequences of pursuing any such action.